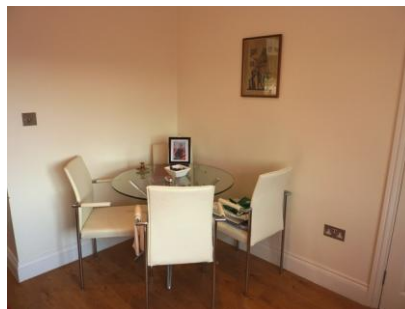


Commonwealth Road, CR3



Two 1 bedroom apartments with reserved parking and set in an elevated position with views, within a short walking distance to Caterham High Street and station.
Early viewing advised.



OIEO £150,000 Leasehold

Hilltop, Commonwealth Road, CATERHAM CR3

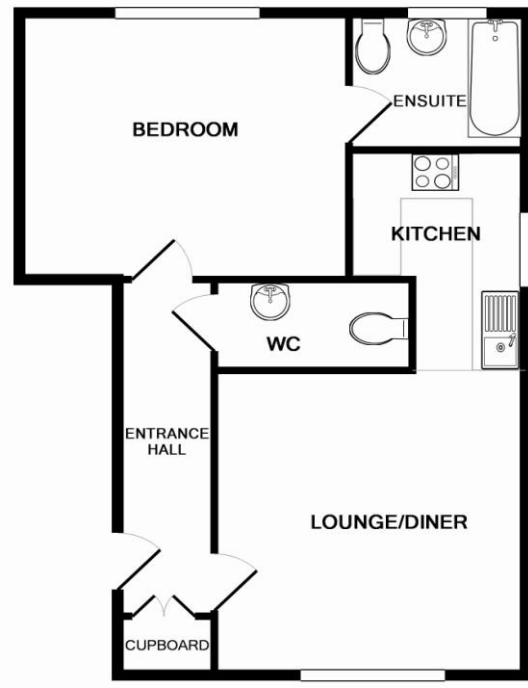
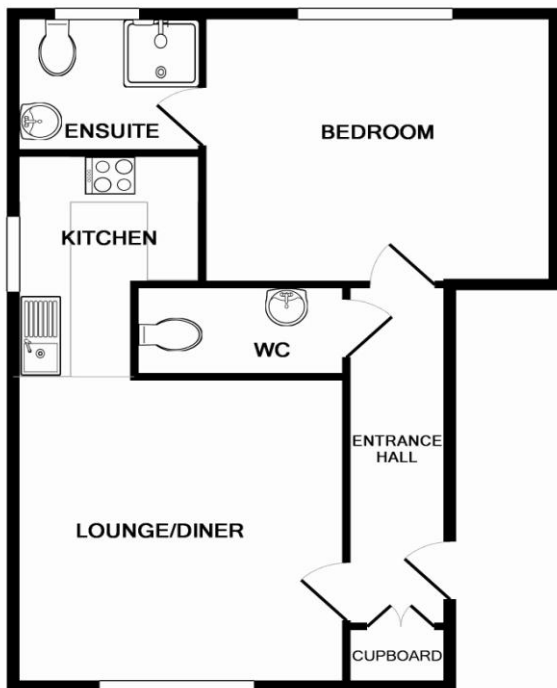
LOCATION: Perfectly situated for the busy commuter with Caterham station within easy walking distance (0.14 miles). The M25 / junction 6 is also within easy reach. Local shops, including Tesco, are available in Caterham-on-the-Hill.



N.B. Internal photographs are of a variety of apartments in the building and for general guidance on style only.

Flat 1

Flat 2



TOTAL APPROX. FLOOR AREA 541 SQ.FT. (50.2 SQ.M.)

TOTAL APPROX. FLOOR AREA 541 SQ.FT. (50.2 SQ.M.)

Whilst every attempt has been made to ensure the accuracy of the floor plan contained here, measurements of doors, windows, rooms and any other items are approximate and no responsibility is taken for any error, omission, or mis-statement. This plan is for illustrative purposes only and should be used as such by any prospective purchaser. The services, systems and appliances shown have not been tested and no guarantee as to their operability or efficiency can be given
Made with Metropix ©2011

Whilst every attempt has been made to ensure the accuracy of the floor plan contained here, measurements of doors, windows, rooms and any other items are approximate and no responsibility is taken for any error, omission, or mis-statement. This plan is for illustrative purposes only and should be used as such by any prospective purchaser. The services, systems and appliances shown have not been tested and no guarantee as to their operability or efficiency can be given
Made with Metropix ©2011